

## EQUIPMENT



myfog

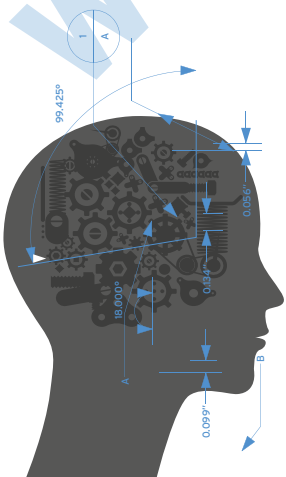
### MIST GENERATOR FOR AIRFLOW VISUAL TESTING IN CLASSIFIED ENVIRONMENTS AND LAMINAR FLOW CABINETS

#### DESCRIPTION

According to the ISO 14644-3 Annex B7 International Standard, airflows in all classified environments of any ISO class should be visually verified every 24 months. Among the listed methods, the generation of tracers that clearly visualise speed and direction of the airflows, is suggested.

The test is carried out in the areas of interest by taking pictures of the airflows made visible by the fog during “at rest” conditions (with no personnel present and no equipment in use).

The purpose of this type of test is to verify and certify that the airflow devised and installed to protect the critical areas is working efficiently.



## APPLICATIONS

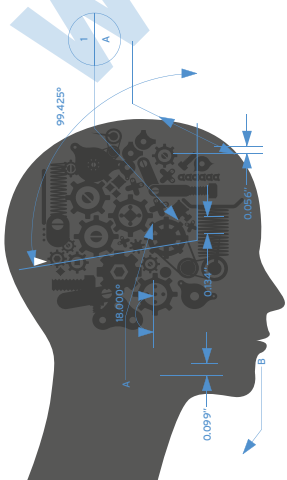
- Visualisation of airflow directions in:
  - classified environments
  - laminar flow areas (e.g.: liquid filling machines in asepsis)
  - weighing stations (e.g.: powder weighing and sampling)
  - laminar flow cabinets
- Balancing pressures between rooms (visual indication)
- Identification of air stagnation pockets
- Personnel training

## BENEFITS

- It works with WFI only
- Cold mist generation (no warm-up required)
- No gas supply or consumables required
- Compact design
- Dedicated and innovative firmware
- Remote control, including start-stop, mist speed and intensity adjustment
- CE mark
- Castors available (optional)
- Sturdy carrying case with castors for easy transport

## MULTIFUNCTION TOUCH SCREEN DISPLAY

- 2.8" (7 cm) color TFT w/touch screen
- Water level visualisation with status indication
- Temperature monitoring and diagnostics with graphic visualisation
- Automatic transducers management to maximise ultrasound life span
- Mist intensity adjustment
- Fan speed adjustment (mist speed adjustment)
- Quick start and stop
- Monitoring activities: machine working hours, mist generation and functioning hours of each piezoelectric transducer
- Diagnostics of piezoelectric transducers
- Alarms diagnostics display
- Password protected service and diagnostics menu
- Pause mode
- Cycle reset in case of power failure or pause mode
- Remote control
- Buzzer



## ACCESSORIES

### AM11222 - Multi-nozzle rigid tubing

This useful accessory allows a uniform distribution of the generated mist along the whole length of the tube. Specially designed nozzles ensure a constant output speed and a constant quantity of dispensed fog. The tubing can be divided into two sectors to facilitate transportation.



### AM1123 - Stand with castors

The basement is provided with magnets that fix MyFog during movement.



### AM1124 - Tripod with support

The Tripod allows to put the PVC flexible tubing very close to the area under examination. Furthermore, thanks to the tripod the operator can leave the room and manage the machine using the remote control.



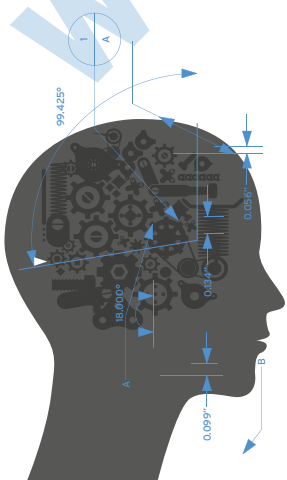
### AM1125 - Flexible tubing 41 mm diameter

The flexible tubing with 41 mm diameter allows the airflow to be directed to working areas difficult to be reached.

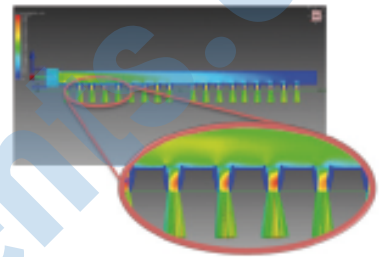


### AM1126 - Extension for multi-hole rigid tubing

The extension for multi-hole rigid tubing allows to increase the length of the rigid tubing.



The picture shows how the speed of the fog remains constant despite the variation of pressure along the tube, caused by the distance from the entry point of the tube.

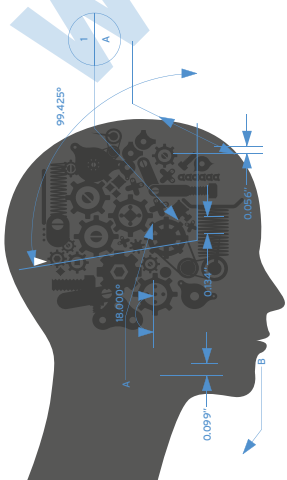


MyFog comes with an operating manual that contains:

- proper use procedures
- regular maintenance procedures
- CE certificate of conformity

Rules and reference guidelines:

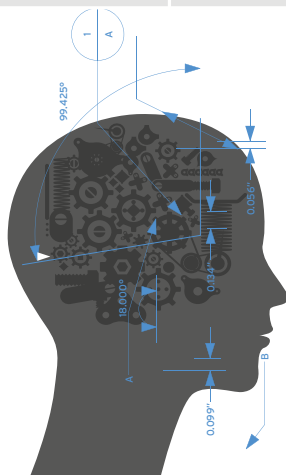
- 1999/05/CE on radio equipment and telecommunications terminal equipment
- EN 61010:2010



Ultrasound vibrating elements	18
Fan	12V, IP68
Touchscreen multifunction display	2.8" full color TFT w/touch screen
Materials	AISI 304 SS, aluminium and ABS
Piezoelectric transducers functioning hours	up to 15000 hrs
Mist flow rate	5 to 20 m³/hour (3 to 12 CFM)
Visual range after generation	3.5 mt
Operating time	From 45 min to 90 min
Flexible tube	3.3 mt x Ø80 mm (10 ft x Ø 3.50 in), PVC
Dimensions	328 x 430 x 358 mm (L x H x P) 12.9 x 16.9 x 14 in (L x H x P)
Net weight	19.5 Kg
Power supply	230V, 50 Hz - 550 W

AM1100	<p>MyFog mist generator</p> <p>Includes:</p> <ul style="list-style-type: none"> <li>• AM1120 Flexible PVC tubing Ø80 mm; 3.3 m</li> <li>• AM1121 Case with castors</li> <li>• Remote Control</li> </ul>
--------	---

AM1100IQOQ	MyFog IQ-OQ documentation
AM1120	Flexible PVC tubing Ø80 mm; length 3.3 m
AM1121	Case with castors
AM1122	Multi-nozzle rigid tubing length 1200 mm separable into two pieces
AM1123	Stand with castors for MyFog
AM1124	Tripod with support for flexible PVC tubing
AM1125	Flexible tubing Ø41 mm - length 3.30 m
AM1126	Extension for multi-hole rigid tubing; length mm 600



AM Instruments Srl  
2 Limbiate MB - Italy  
tel. +39 028728921  
aminstruments.com

AM Instruments Srl  
Via Isonzo 1/c 20812 Limbiate MB - Italy  
tel. +39 028728921  
aminstruments.com